



FALL EVENT CALENDAR

2025

AEG

Established in 2002, the Assessment and Evaluation Group (AEG) centres collaborative scholarship to engage in innovative research with the goal of contributing to knowledge in assessment, evaluation, and knowledge mobilization. Our research, services, and educational programming promote learning and improving educational systems through rigorous research and effective community engagement. Our work is predicated on the belief that high-quality assessment and evaluation are drivers of meaningful educational change. We offer ongoing Fall events for sharing experiences, knowledge, and advice amongst AEG members to encourage growth in scholarship and our collective research interests

TYPES OF EVENTS



Community Building

These events serve as a catalyst for fostering collaboration among all AEG members, nurturing a sense of community and building a sense of belonging.



Graduate Student Learning

These events focus on knowledge exchange and discussions on research and academia.



Grad to Grad

These events facilitate engaging opportunities for grad-to-grad conversations and support, cultivating professional networks among the AEG community.

SEPTEMBER

18

Welcome to AEG!

Thursday, September 18th,
12:00-1:00 pm | DM A241/242

Meet the faculty and students and learn more about our research group!
Click [here](#) for registration!



24

Workshop: Refining Proposals

Wednesday, September 24th,
5:00-8:00pm

Advanced registration required! 2-part grant writing workshop series by SGSPA.
Click [here](#) for registration!



SUN	MON	TUE	WED	THU	FRI	SAT
	1	2	3	4	5	6
7	8	9	10	11	12	13
14	15	16	17	18	19	20
21	22	23	24	25	26	27
28	29	30				

OCTOBER

01

Queen's Framework for Community Engagement

Wednesday, October 1st,

11:00 am - 4:00 pm | Isabel Bader

Volunteers from AEG needed to work with Dr. Michelle Searle at the launch of the Queen's Framework for Community Engagement.

Lunch provided!

Click [here](#) to volunteer!



SUN

MON

TUE

WED

THU

FRI

SAT

1

2

3

4

5

6

7

8

9

10

11

12

13

14

15

16

17

18

19

20

21

22

23

24

25

26

27

28

29

30

31

28

An interactive watch party: Krazy Glue Messaging ~ Making Your Evaluation and Research Findings Stick

Tuesday, October 28th, 1:00 pm - 3:00 pm | AEG Lab

Learn how to make your key messages stick! Join fellow AEG members for snacks and a viewing of the CESBC webinar with Kylie Hutchinson.

Click [here](#) if you're interested!



NOVEMBER

20

SSHRC Proposal Writing & Feedback

Thursday, November 20th,
1:00-2:30 / 5:00-6:30 | Location TBA

Join with a draft of your proposal and receive feedback from past graduate student recipients and faculty.

Click [here](#) for registration!



26

Assessment Connection Part 1 Assessment and Research

Wednesday, November 26th,

12:50 - 1:30 pm

Date, location and registration details to come.



13

Share and Learn - Assessment and Experiential Learning

November 13th 1:00 pm - 2:30 pm

Hear from AEG members and the Experiential Learning Hub to learn more about assessing and evaluating experiential learning.

More details to come.



SUN	MON	TUE	WED	THU	FRI	SAT
						1
2	3	4	5	6	7	8
9	10	11	12	13	14	15
16	17	18	19	20	21	22
23	24	25	26	27	28	29
30						

DECEMBER

03

End of Term Social!

Wednesday, December 3rd,
5:30 pm | Market Square

Join us in market square for an evening of skating
and hot chocolate to celebrate the end of the term!
Click [here](#) to register!

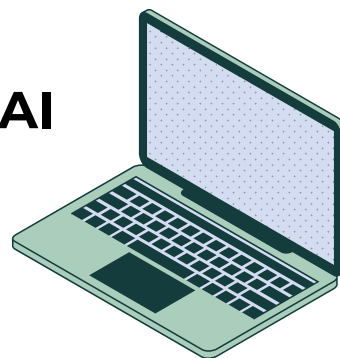


SUN	MON	TUE	WED	THU	FRI	SAT
	1	2	3	4	5	6
7	8	9	10	11	12	13
14	15	16	17	18	19	20
21	22	23	24	25	26	27
28	29	30	31			

17

Assessment Connection Part 2: Thinking about Assessment and AI

Wednesday, December 17th,
12:50 - 1:30 pm
Date, location and registration details to come.



AEG

2026 Events Coming Soon.

We hope to see you there!



Assessment & Evaluation Group